



AGA KAHN FOUNDATION OTTAWA

ROMEX® Canada was approached in the Fall of 2019 as an option to revitalise the paved surface of the Aga Khan Foundation building on Sussex Drive in Ottawa, Canada. Known as the coldest major city in the world with temperatures reaching -50 °C, the traditional sand set system had suffered badly from water ingress and frost heave.

After consultation between the design team, Moriyama & Tashima Architects, UL building Envelope Services and Graebek Construction, our ROMEX® System Guarantee (RSG) product with 10-year manufacturers warranty was selected for the revitalisation project.



ROMEX® Product(s)

RSG Permeable Paving System with ROMEX® - D1 Jointing Mortar, Adhesion Elutriant and Trass Bed Drainage Bedding Mortar.



Application

Revitalizing the paving surfaces around the building



Location

199 Sussex Drive, Ottawa



Year

2020



Landscape Architect

Moriyama & Teshima Architects



Client

Aga Khan Foundation Canada



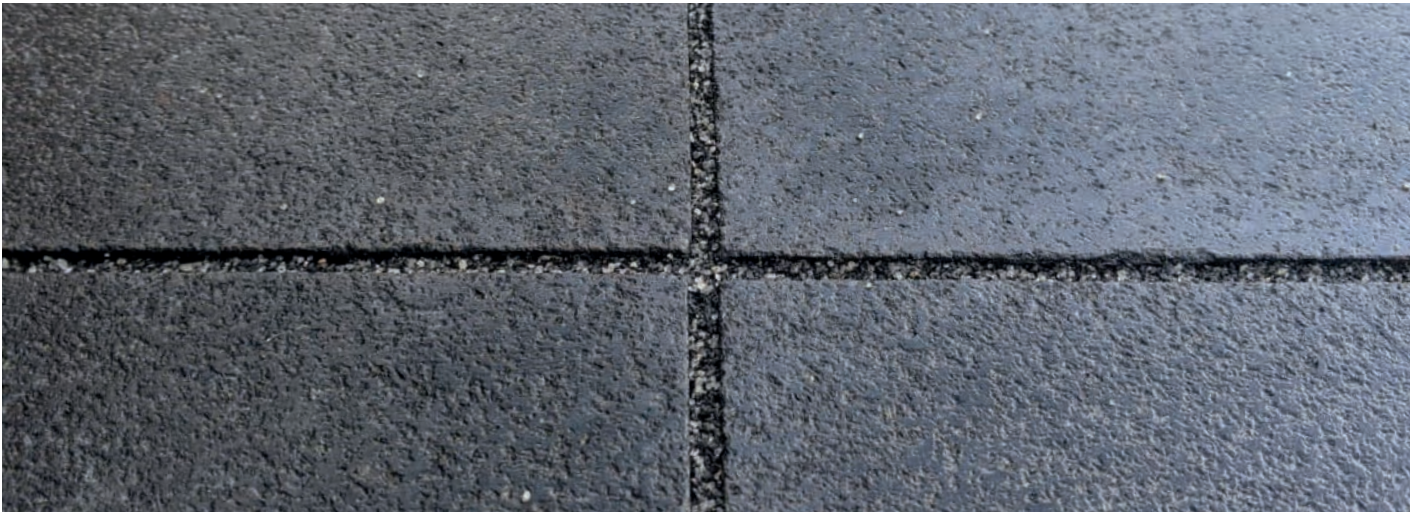
URL

<https://www.akfc.ca/>



Categories

Commercial



Product Selection

The ROMEX® system's proven ability to manage storm water runoff, resist frost and freeze-thaw cycles, as well stand the test of time with the assurance of the 10-year manufacturers meant the ROMEX® RSG system was selected for the revitalisation project. RSG system comprises three products, namely; Trass Bed provides a permeable slab to support the paving, Adhesion Elutriant secures the granite to the substrate and D1 grout which securely and comprehensively fills the joints eliminating debris collection, trip hazards and allowing the surface to be regularly pressure washed.

Project Needs

1. Frost Resistance due to temperatures reaching -50 °C
2. Stormwater management and snow run off
3. Safe walking surface
4. Ability to take patron and service vehicle loads including scissor lifts, snow removal equipment as well as armoured vehicles

Project Solution

ROMEX® System Guarantee was chosen to provide a low maintenance and durable surface which could work with water ingress, eliminate frost heave and paver shift whilst being able to withstand corrosion from de-icing salts during Ottawa's cold winters. The RSG system secures the pavers against weather and movements and works with the elements to provide legacy and peace of mind for years to come. With large numbers annual visitors ranging from the general public to government officials, the requirement for vehicle loading and having already seen the decay of the existing paved surface over a relatively short period of time since its construction, the client and design team wanted to alleviate these headaches. In order to meet and exceed their outlined criteria, the client selected our ROMEX® system with 10 year-warranty and 50 year plus life expectancy to revitalize the surface.

Project Gallery



ROMEX® Canada

260 Riverside Drive,
North Vancouver,
BC. V7H 2M2

info@romexcanada.com
www.romexcanada.com
Hotline 1-604-913-1579

