



SIMON FRASER UNIVERSITY (SFU)

Renovations, renewals and modernizations.

Simon Fraser University's Burnaby campus is undergoing several significant infrastructure upgrades as part of a University's attempt to inject new life and energy into their main campus. The \$400 million upgrade which is scheduled to take place over a three-year period will see the addition of new facilities aimed at enhancing the campus experience and restoring the institutions vision of being Canada's engaged university.

The University selected Ledcor as the main contractor to drive the 200,000 sqft renovation of the existing paved areas, providing a fresh, modern feel to the heart of the Burnaby campus.



ROMEX® Product(s)

RSG Permeable Paving System with ROMPOX® - DRAIN Jointing Mortar, Adhesion Elutriant and Trass Bed Drainage Bedding Mortar



Application

200,000 sqft renovation of campus walkways, convocation hall and public areas



Location

Burnaby, BC



Year

2019



Landscape Architect

Public Architecture



Client

Simon Fraser University



URL

<https://www.sfu.ca/>



Categories

Commercial (?)



Product Selection

Permeability, durability and usability were signalled as the top priorities for Simon Fraser University's paving renovation. Our "ROMEX® System Guarantee" paving system, comprising of our permeable Trass-Bed bedding, Adhesion Elutriant and 2 component jointing material will allow students to enjoy solid, puddle free surfaces with a 50 years+ life expectancy, with the first decade backed by our 10-year warranty cover.

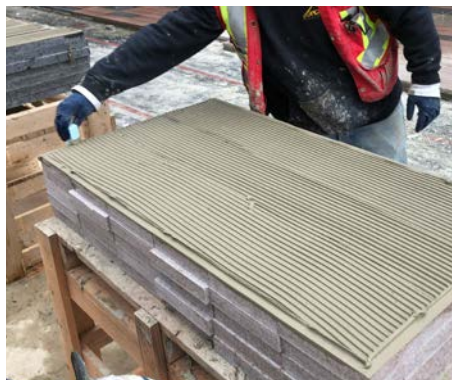
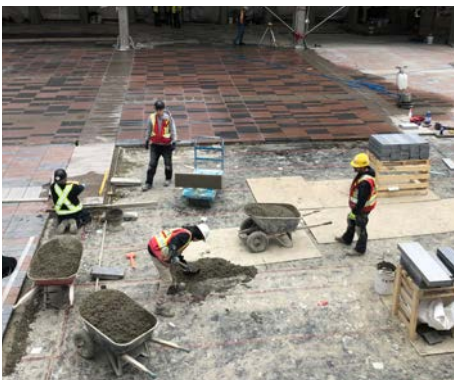
Project Needs

1. A permeable surface capable of dealing with the expected annual rainfall on Burnaby mountain
2. Durable system capable withstanding industrial cleaning and of supporting a high level of pedestrian loading with near elimination of trip hazards and liabilities for users
3. Faster than average install and application rates to allow the renovated areas to meet tight convocation deadlines and be re-opened to students as soon as possible

Project Solution

The multiple economic, environmental and sustainable benefits of our 3-part RSG paving system made Romex the only choice to support the University's campus wide renovations. By utilising our premier permeable hardscape offering, SFU and its student body can enjoy strong, puddle free and attractive walkways for years to come. All contractors and suppliers involved in delivering the SFU project can be proud of the results on such an iconic and innovative installation for the Pacific Northwest Region.

Project Gallery



ROMEX® Canada

260 Riverside Drive,
North Vancouver,
BC. V7H 2M2
info@romexcanada.com
www.romexcanada.com
Hotline 1-604-913-1579

