



ROMEX® SYSTEM GUARANTEE

BEDDING & GROUTING 10 YEAR WARRANTY

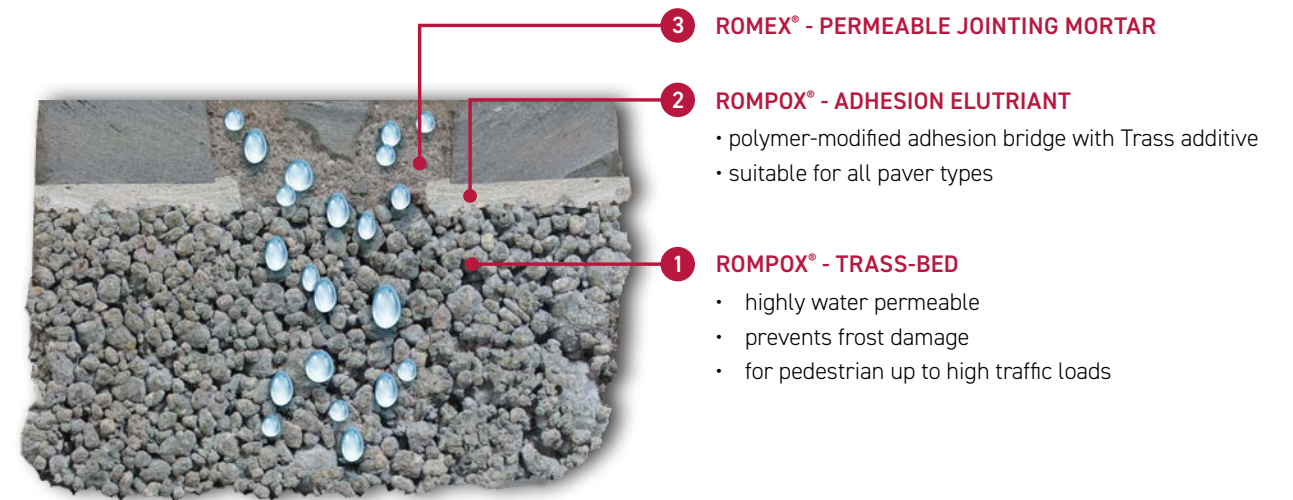
ROMEX® NORTH AMERICA
toll-free: 1-844-529-2330
info@romex.us
www.romex.us
info@romexcanada.com
www.romexcanada.com





The ROMEX® Solution: Bonded Construction

(for all types of paving from natural stone to concrete as well as ceramics)

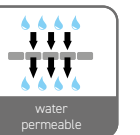


ROMPOX® - TRASS-BED and ROMPOX® - TRASS-BED-COMPOUND

High quality, polymer-modified Trass Bed cement is used exclusively in ROMEX® RSG assemblies because of (1) its superior bonding strength and (2) the Trass mineral additive inherent in its formulation.

In conventional Portland cement products - without Trass - lime particles migrate up through joints, onto to the paving surface, and then react with CO₂ in the air. This reaction produces an unsightly, hard white residue on the paving surface which is known as 'efflorescence'.

The key advantage to Trass additive is a near elimination of the risk of efflorescence and avoids the problems it creates with unhappy clients.



WORLD'S FIRST PERMEABLE SLAB

In addition to the superior strength of ROMEX® Trass Bed, it remains highly water-permeable! Thus, when used in conjunction with ROMEX® permeable Jointing Mortars, a fully permeable bonded construction can be achieved. This provides viable options for stormwater management, and can make a contribution to sustainability and environmental objectives in landscape construction, while still providing a long-lasting, load-bearing, and attractive surface.

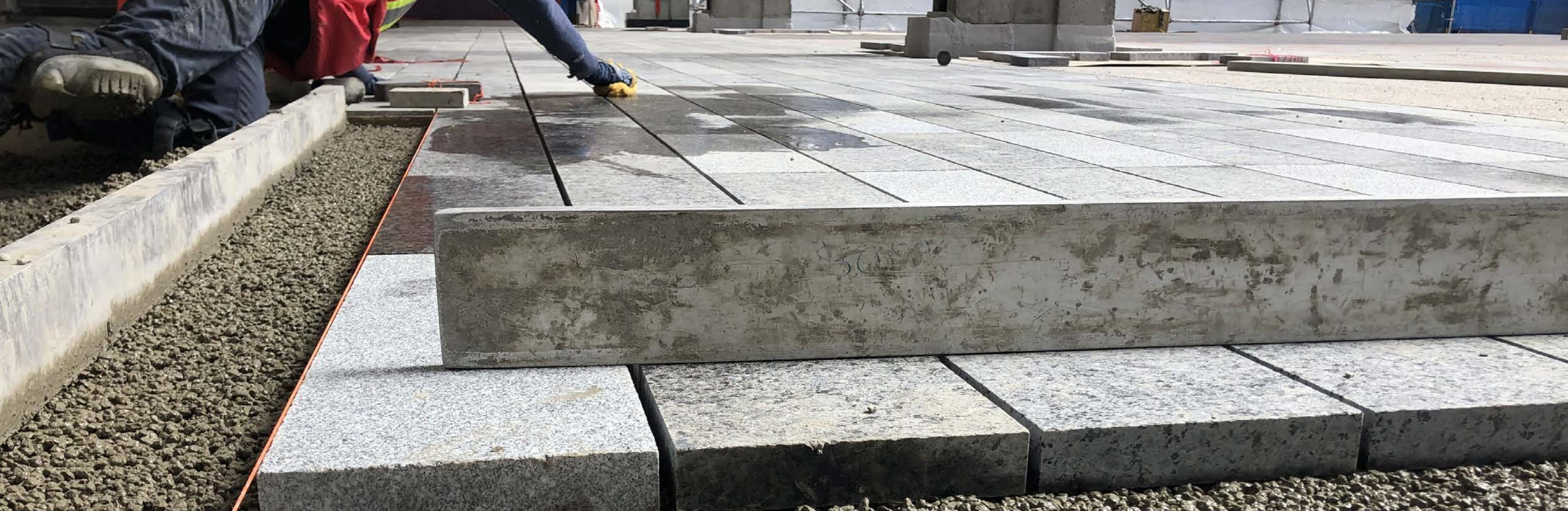
With the ROMEX® SYSTEM GUARANTEE, or 'RSG' for short, ROMEX® is the first manufacturer of paver bedding and jointing systems to offer installation companies peace of mind and a competitive advantage in the industry.

i Talk to us about the guarantee conditions!

ROMEX® SYSTEM GUARANTEE

The ROMEX® SYSTEM GUARANTEE is a competitive advantage for any customer. ROMEX® is the first and only manufacturer in the field of paving stone and slab construction to offer such a warranty to its customers. ROMEX® means security and peace of mind, which is especially important for companies who today must often provide a multi-year warranty on their construction services to their clients.





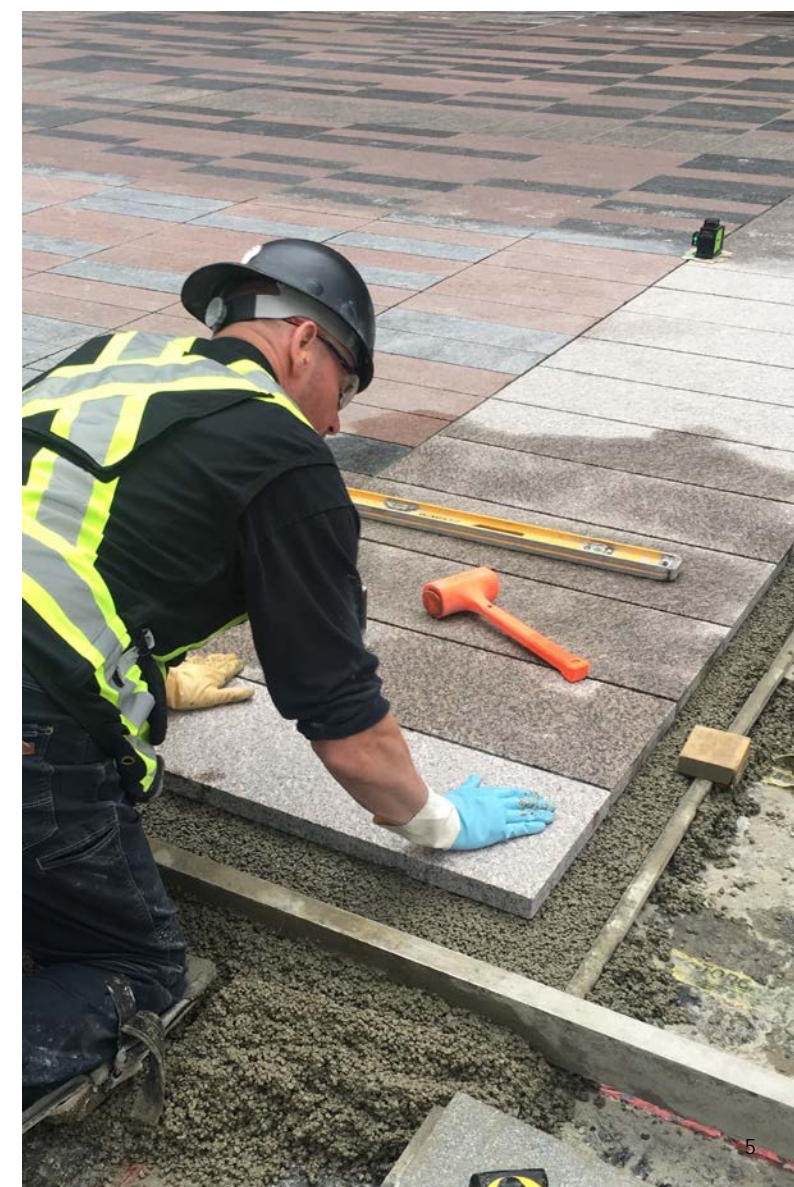
The Correct Setup

TRASS™ - A Rare Mineral with Unique Properties

About 15 million years ago, a meteorite impacted the region where Germany now exists, causing a metamorphosis in the rock bed and creating a novel mineral composition from which the ROMEX®-TRASS™ additive is made today. This additive gives Trass Bed properties that are unique in the world and contributes to the multiple benefits that Trass Bed provides:

- Near elimination of discolouration from efflorescence
- Water permeable / prevents waterlogging
- Freeze-thaw / frost-heave resistant
- Resists de-icing salts and melting agents
- High strength up to 5000 PSI (>35 N/mm²)
- Easy and proven application
- Screed and lay pavers in one step
- Superior structure - does not slough
- Excellent for radiant heating

These are some of the key attributes which allow ROMEX® to offer the 'RSG' Warranty. ROMEX® is the first and only manufacturer in the field of paving stone and slab construction to provide such a warranty to its customers.





Two other key components:

ROMEX® Permeable Jointing Mortar and ROMEX® Adhesion Elutriant



ROMEX® Jointing Mortar

is a revolutionary jointing material invented by ROMEX® over 30 years ago. It employs ROMEX's industry-leading resin technologies mixed with graded silica sands to create a material that has multiple advantages over any other type of jointing material in the world.

It is categorically stronger and more resilient to the forces of nature. Despite this strength, it is highly water permeable! ROMEX® Jointing Mortars therefore work in conjunction with permeable Trass Bed to create a fully permeable bonded assembly. It's permeable structure is also resistant to forces of frost heave because water either passes through before freezing or, if trapped in the system, it can expand and contract within the porous matrix.

ROMEX® Jointing Mortars provide another key benefit - dramatically faster installation rates. They install in a fluid state, filling joints completely with no voids, before setting and curing hard, securing the entire paving surface as a unit.

Other inherent benefits include:

- Greatly reduced liability from trip hazards / high heels
- Strong enough to pressure wash every day
- No weeds growing in the joints
- No ants digging voids
- Level surface for furniture / bike stands
- Satisfies accessibility requirements
- Wide range of products for pedestrian loads up to 40 tons

ROMEX® Adhesion Elutriant

is a paver bridge bonding agent which is superior to conventional 'thin-set' mortars.

Elutriant is applied to the underside of the paving stones to secure them to the Trass Bed. Elutriant also contains Trass cement - which all but eliminates efflorescence. Its polymer-enhancements work in conjunction with the Trass Bed polymers to create a superior bonding strength, yielding pull test and shear forces test results multiple times higher than conventional.

ASTM Standards

The ASTM (American Society for Testing and Materials) thus represents the current state of technology and should be used as part of the contractual terms and conditions.

www.astm.org





ROMEX® SYSTEM GUARANTEE

RESIDENTIAL SITES

(Driveway, Walkway, Pool and Patio)

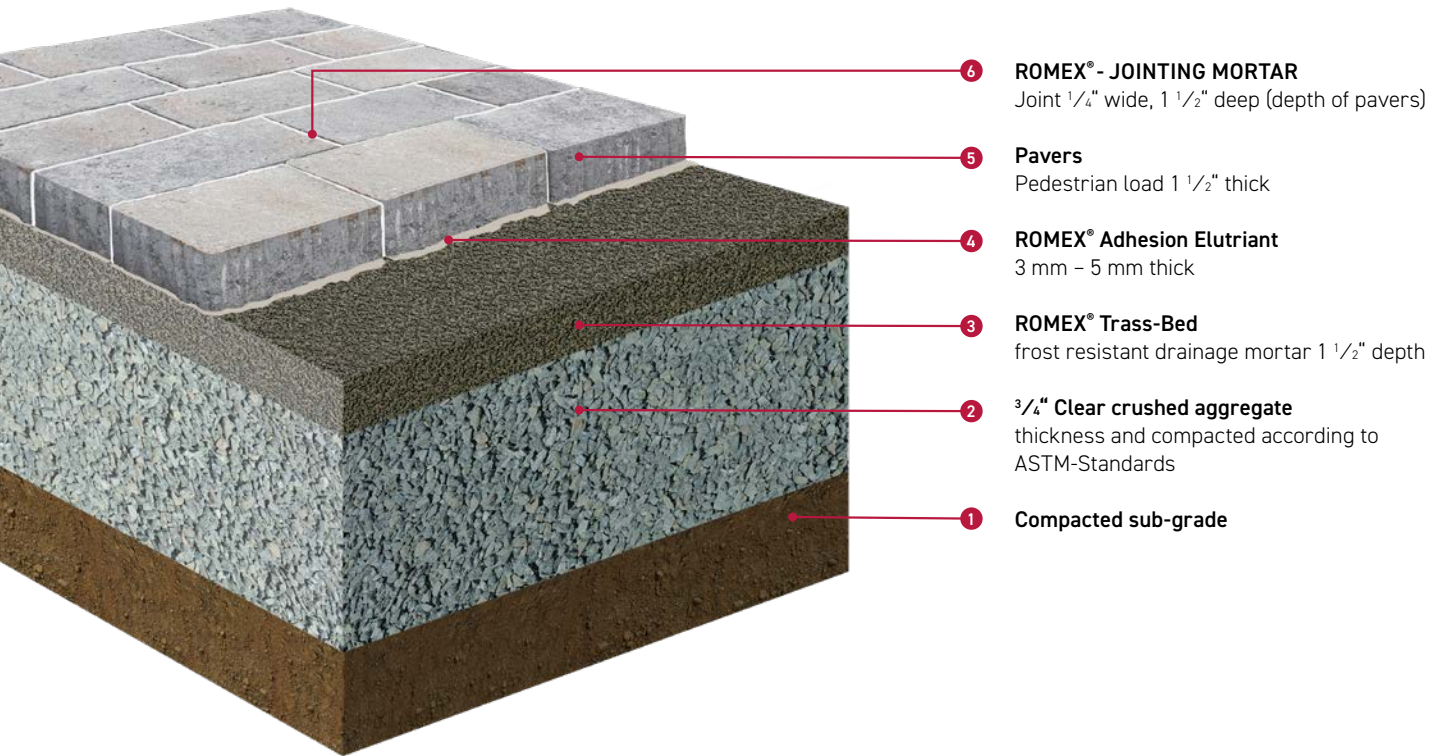
Residential projects are perfectly suited to benefit from the many advantages that a ROMEX® RSG installation provides.

Common areas of application include driveways, walkways, pool decks, patios, and more. Often, homeowners especially appreciate the simple pleasure of never seeing weeds and ants on their paved surfaces! And due to the long life expectancy, a ROMEX® RSG system increases property value and provides peace of mind.

ROMEX® SYSTEM

BONDED-RESIDENTIAL & COMMERCIAL

For the **bonded construction** of paving stones on grade pedestrian

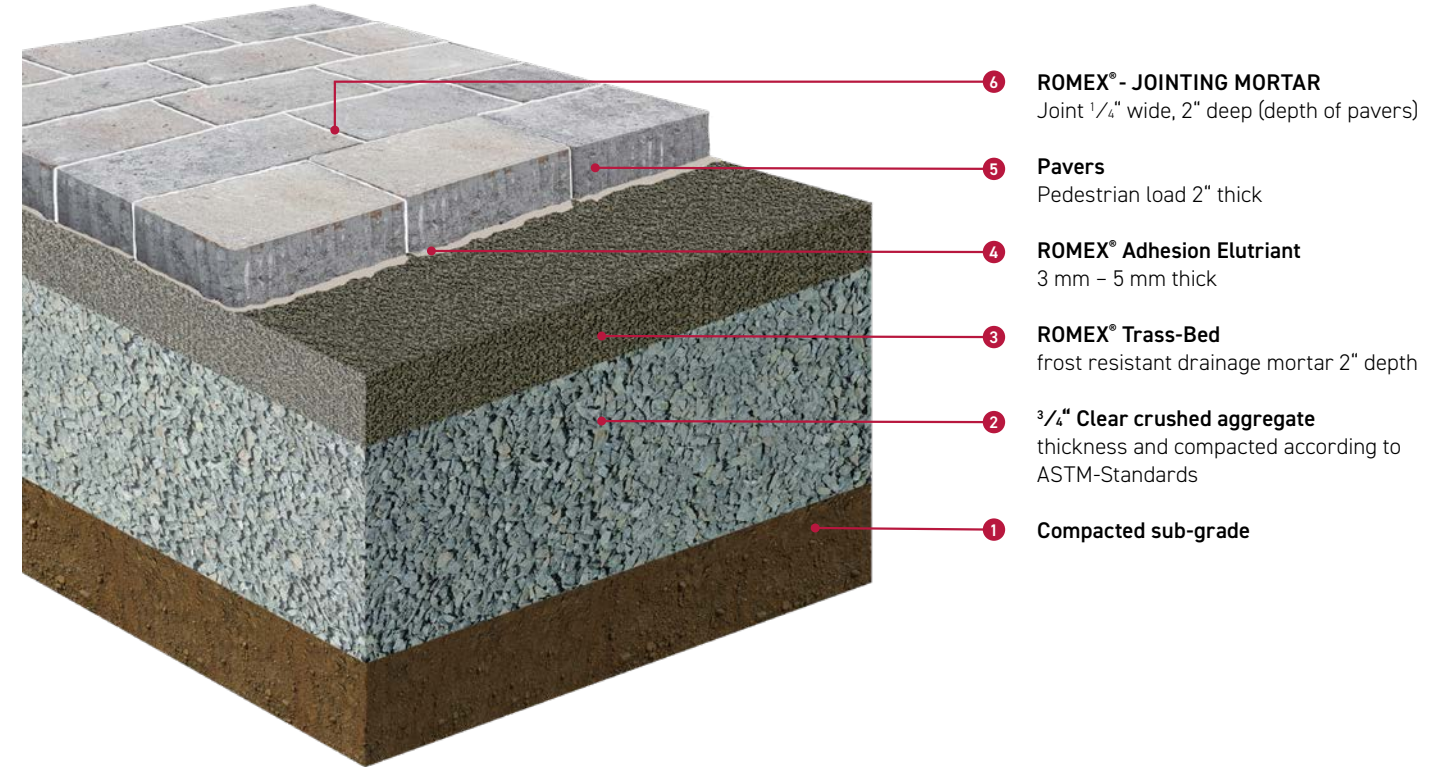


- 6 ROMEX® - JOINTING MORTAR
Joint 1/4" wide, 1 1/2" deep (depth of pavers)
- 5 Pavers
Pedestrian load 1 1/2" thick
- 4 ROMEX® Adhesion Elutriant
3 mm - 5 mm thick
- 3 ROMEX® Trass-Bed
frost resistant drainage mortar 1 1/2" depth
- 2 3/4" Clear crushed aggregate
thickness and compacted according to ASTM-Standards
- 1 Compacted sub-grade

ROMEX® SYSTEM

BONDED-RESIDENTIAL & COMMERCIAL

For the **bonded construction** of paving stones on grade vehicle



- 6 ROMEX® - JOINTING MORTAR
Joint 1/4" wide, 2" deep (depth of pavers)
- 5 Pavers
Pedestrian load 2" thick
- 4 ROMEX® Adhesion Elutriant
3 mm - 5 mm thick
- 3 ROMEX® Trass-Bed
frost resistant drainage mortar 2" depth
- 2 3/4" Clear crushed aggregate
thickness and compacted according to ASTM-Standards
- 1 Compacted sub-grade

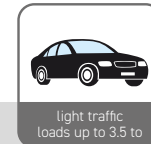
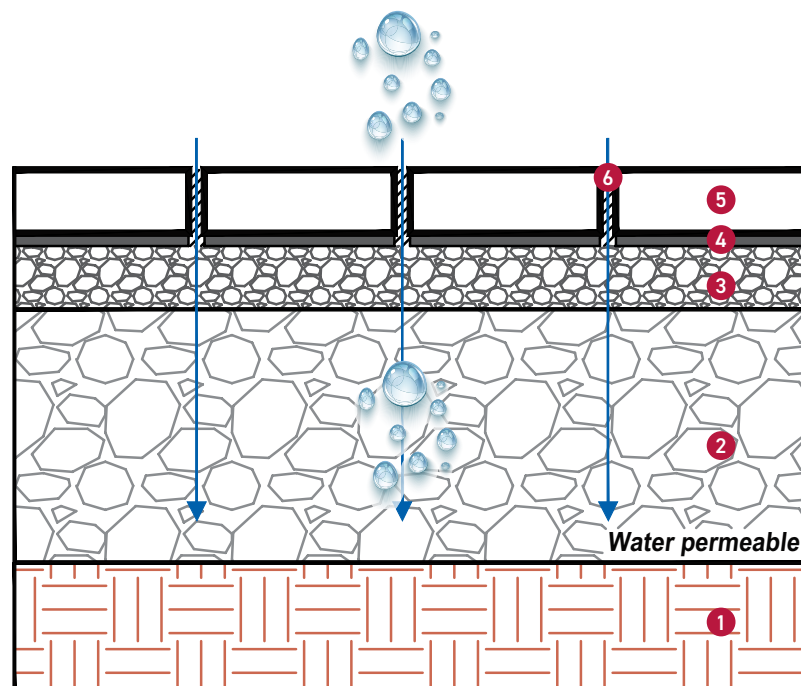


PEDESTRIAN on grade:

Pedestrian-only rated paving assemblies not accessible to vehicle traffic.

Minimum requirement for fastenings/ surface covering: Minimum nominal thickness (stone height)

= 50-100 mm | 2-4"

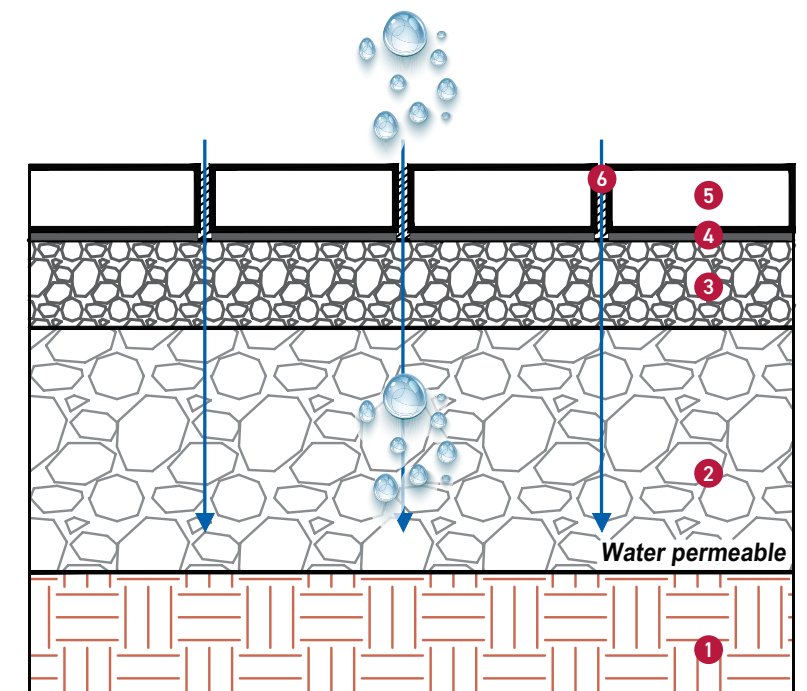


REGULAR VEHICULAR (up to 3.5 tons) on grade:

E.g. garage access, parking spaces etc. Vehicle traffic up to 20 tons is permitted for occasional use (delivery trucks, emergency vehicles etc)

Minimum requirement for fastenings/ surface covering: Minimum nominal thickness (stone height)

= 50-100 mm | 2-4"





ROMEX® SYSTEM GUARANTEE

COMMERCIAL SITES

(Streets/paths/squares)

Commercial projects, institutional and public squares, and public streets with paving stone and slab surfaces reap multiple advantages and value-adds by employing a ROMEX® RSG paving assembly.

Primarily, long-term durability and safety with reduced liabilities provide the strongest return on investment over alternatives. Dramatically faster installation timelines reduce risk by cutting hours on site while allowing for faster re-opening.

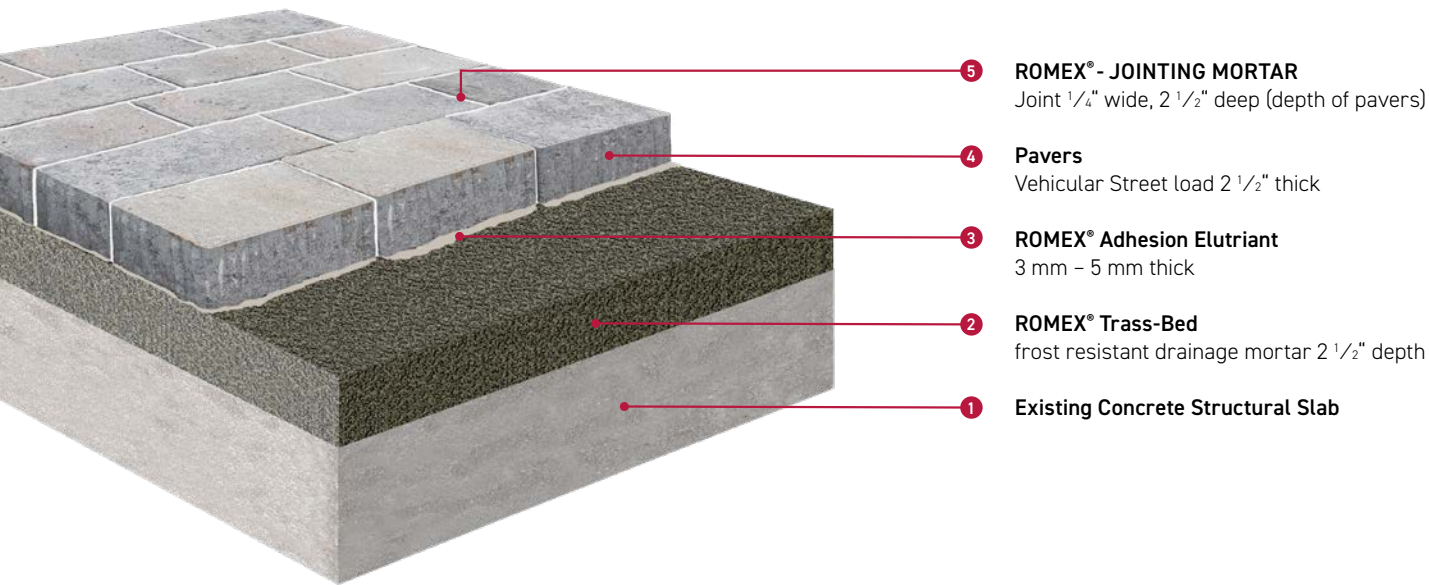
Water permeability offers much-needed solutions for on-site stormwater management, capturing runoff for groundwater recharging, irrigation, or controlled release to city systems. And that same permeable structure takes away the power that water can have if ever trapped as it freezes, all but eliminating the forces of frost heave.

A ROMEX® RSG paving assembly is also resistant to other external influences such as de-icing salts and melting agents, torsional and shear forces from high traffic loads, the use of sweeping machines and rigorous maintenance, and the general impacts of large-scale public gatherings and events - providing peace of mind to designers, owners, and users.

ROMEX® SYSTEM

BONDED-RESIDENTIAL & COMMERCIAL

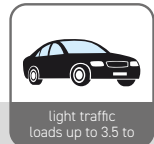
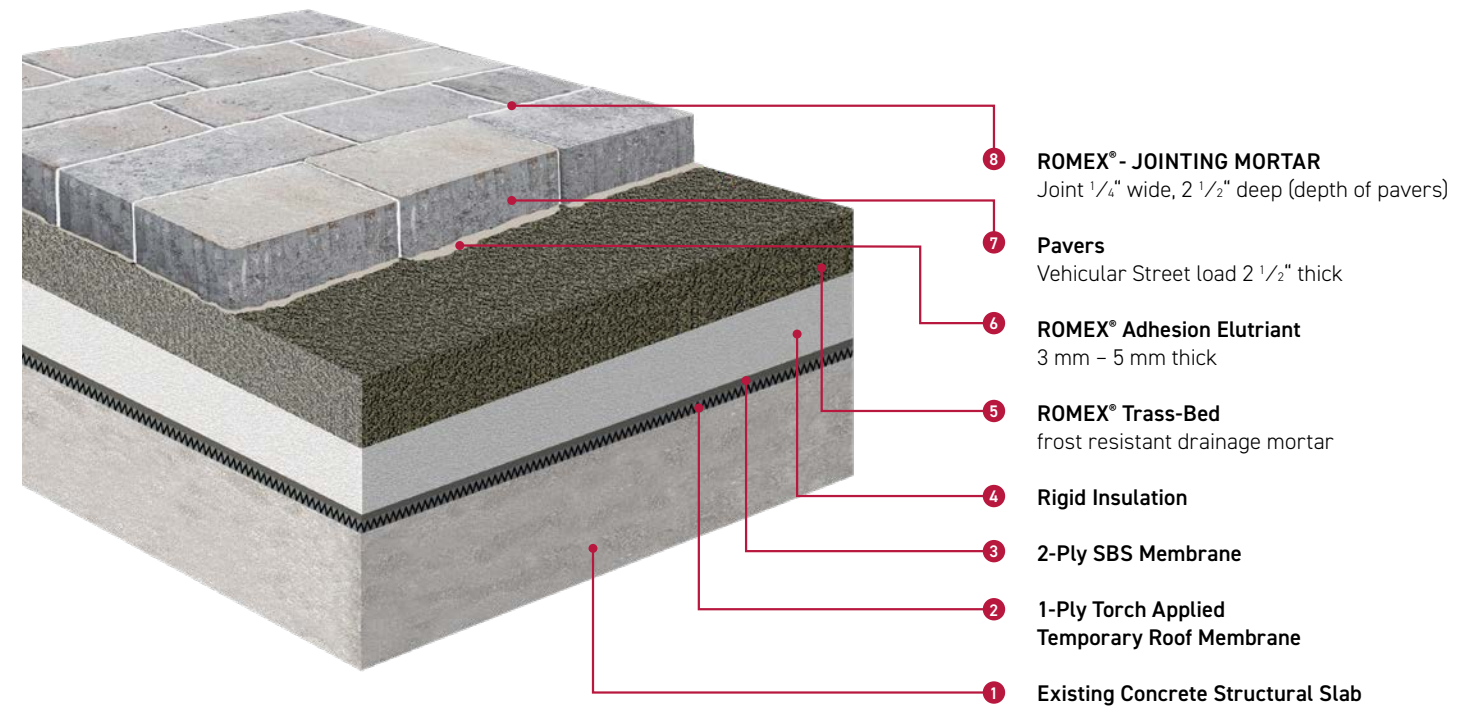
For the bonded construction of paving stones on slab



ROMEX® SYSTEM

BONDED-RESIDENTIAL & COMMERCIAL

For the bonded construction of insulated roof (light vehicle loading)

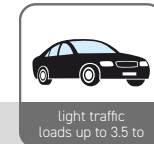
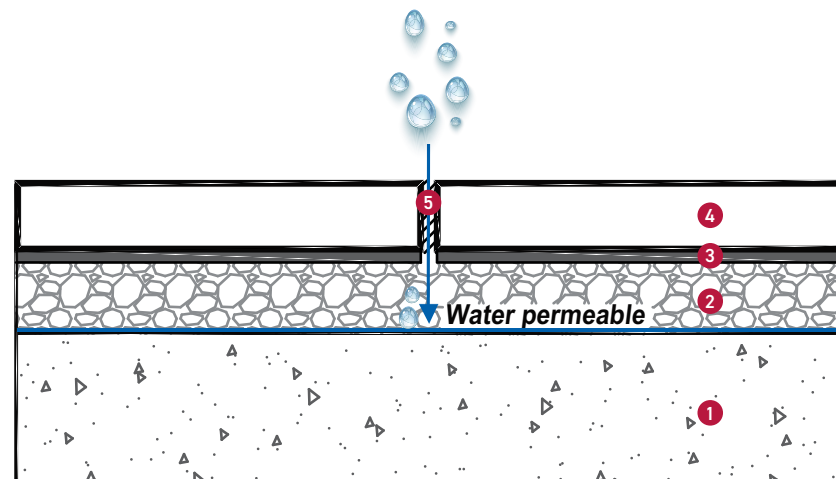


REGULAR VEHICULAR (up to 3.5 tons) on slab:

E.g. garage access, parking spaces etc.
Vehicle traffic up to 20 tons is permitted for occasional use (delivery trucks, emergency vehicles etc.)

Minimum requirement for fastenings/
surface covering: Minimum nominal
thickness (stone height)

= 50 mm | 2"

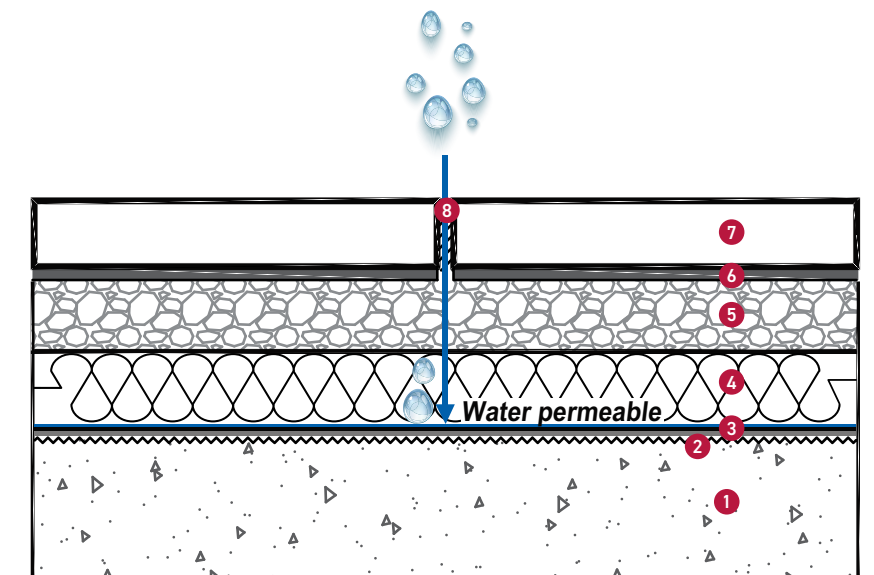


REGULAR VEHICULAR (up to 3.5 tons) on slab:

E.g. garage access, parking spaces etc.
Vehicle traffic up to 20 tons is permitted for occasional use (delivery trucks, emergency vehicles etc.)

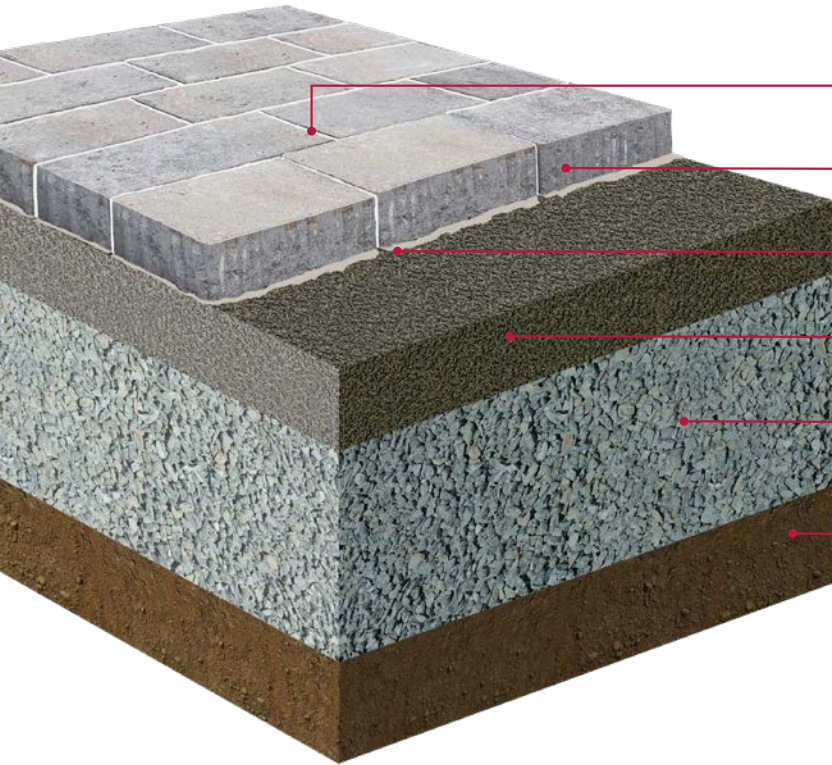
Minimum requirement for fastenings/
surface covering: Minimum nominal
thickness (stone height)

On special request



ROMEX® SYSTEM BONDED-COMMERCIAL

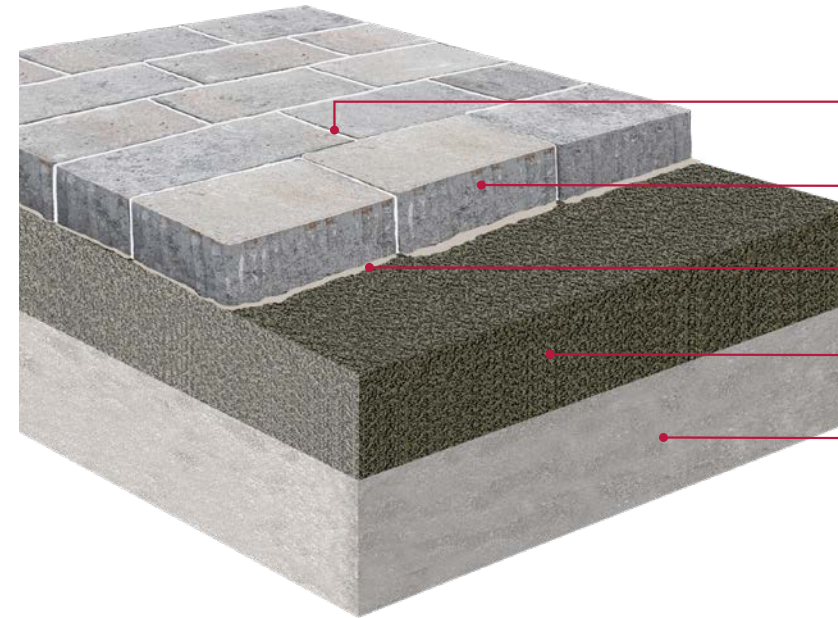
For the **bonded construction** of paving stones on grade



- 6 ROMEX® - JOINTING MORTAR
Joint 1/4" wide, 3" deep (depth of pavers)
- 5 Pavers
Vehicular Street load 3" thick
- 4 ROMEX® Adhesion Elutriant
3 mm - 5 mm thick
- 3 ROMEX® Trass-Bed
frost resistant drainage mortar 3" depth
- 2 3/4" Clear crushed aggregate
thickness and compacted according to ASTM-Standards
- 1 Compacted sub-grade

ROMEX® SYSTEM BONDED-COMMERCIAL

For the **bonded construction** of paving stones on slab



- 5 ROMEX® - JOINTING MORTAR
Joint 1/4" wide, 2" deep (depth of pavers)
- 4 Pavers
Vehicular Street load 3" thick
- 3 ROMEX® Adhesion Elutriant
3 mm - 5 mm thick
- 2 ROMEX® Trass-Bed
frost resistant drainage mortar 4" depth
- 1 Existing Concrete Structural Slab

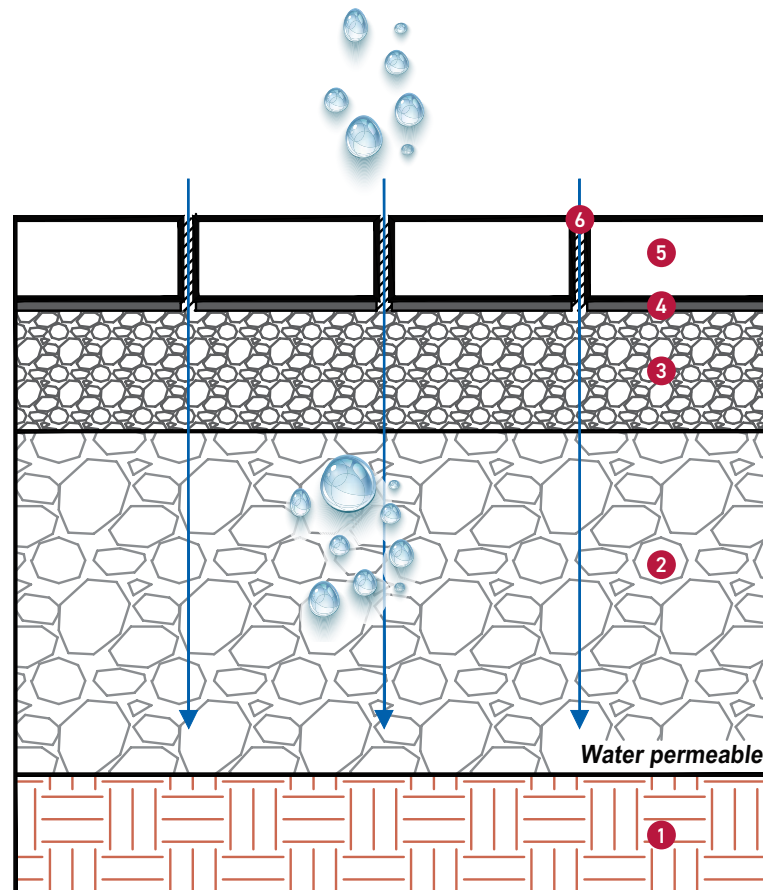


On grade vehicular:

Passenger car traffic including occasional heavy traffic, through traffic by vehicles of the entertainment industry, e.g. residential and residential roads, village main street, district and collection roads.

Minimum requirement for fastenings/
surface covering: Minimum nominal
thickness (stone height)

= 75-100 mm | 3-4"

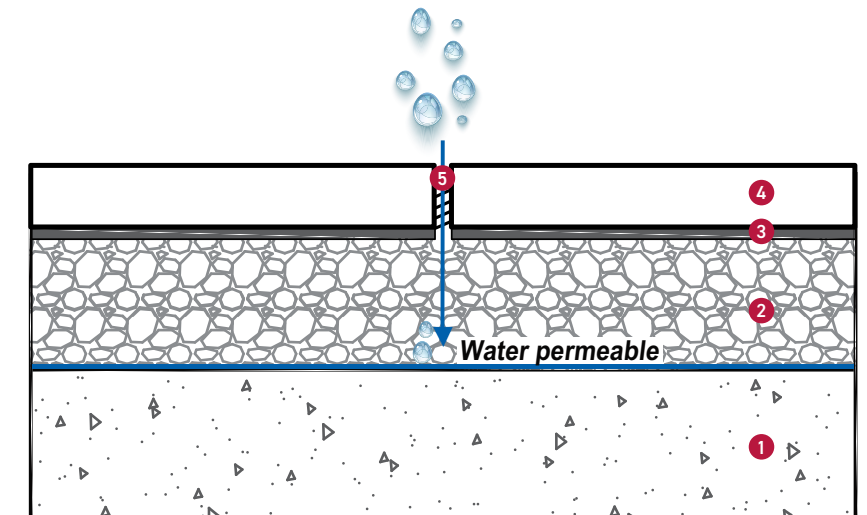


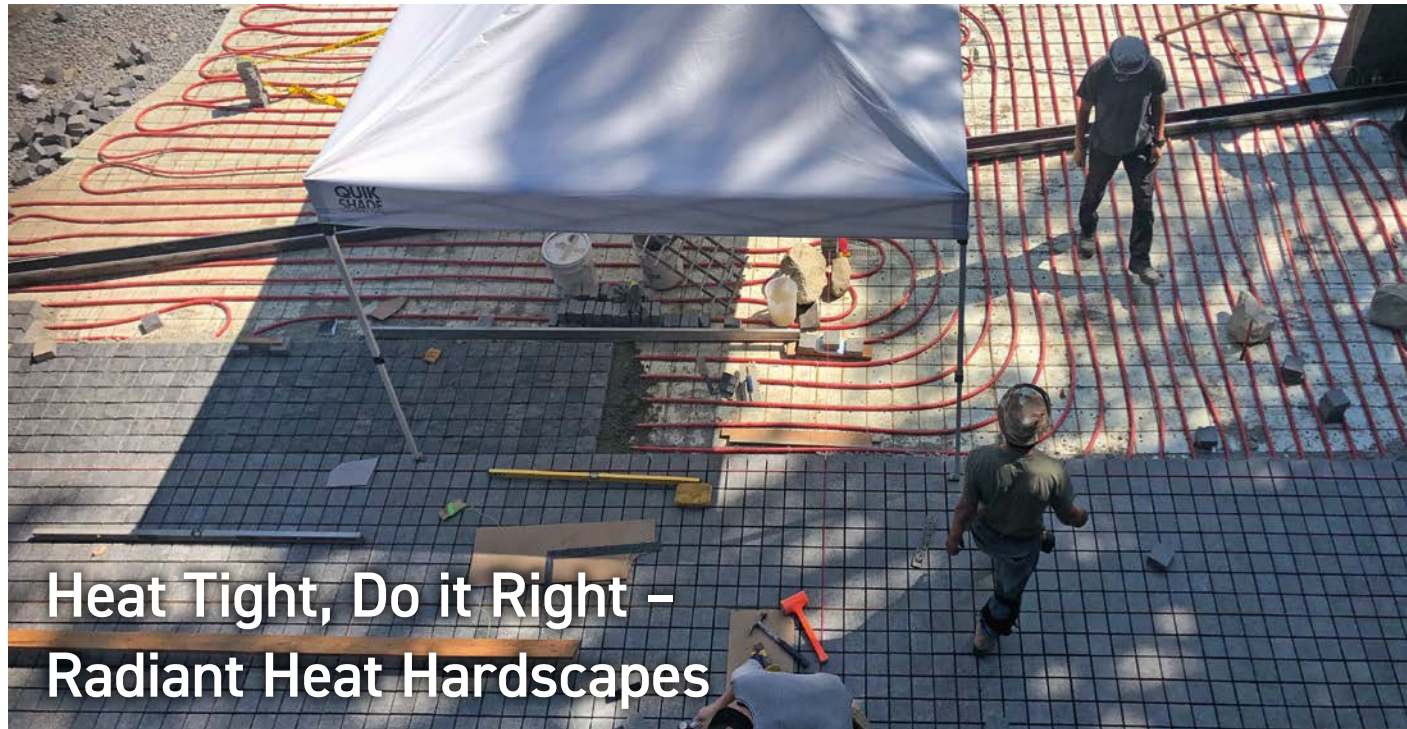
REGULAR VEHICULAR (up to 25 tons) on slab:

E.g. garage access, parking spaces etc.
Vehicle traffic up to 40 tons is permitted
for occasional use (delivery trucks,
emergency vehicles etc.)

Minimum requirement for fastenings/
surface covering: Minimum nominal
thickness (stone height)

= 75 mm | 3"





Heat Tight, Do it Right – Radiant Heat Hardscapes

Cracking, erosion and costly repairs often caused by impermeability are all pain points associated with a traditional concrete slab hardscape installation. These common issues can be accelerated when subjected to rapid freeze-thaw cycles as is the norm with radiant heat hardscapes in below freezing climates. However, ROMEX® Canada have a proven, long-term solution to these climate specific challenges.

Our ROMEX® System Guarantee (RSG) product comprises our permeable Trass-Bed bedding, Adhesion Elutriant and 2-component jointing material to deliver a proven solution that can be seamlessly installed with the latest radiant heat technology.



ROMEX® Trass Bed Compound vs. Concrete

Same ROMEX® product, different application, better results...

RSG's unique combination of permeability and warranty-backed durability makes it the ultimate upgrade to an impervious concrete slab and the perfect answer to challenging winter conditions.

By successfully eliminating the possibility of water becoming trapped within and underneath the radiant heat paving system, ROMEX® Trass-bed retains greater strength and integrity than a traditional, impermeable concrete slab which can become susceptible to erosion, weakening and ultimately cracking.

An easy & efficient one-time installation

Do it once, Do it right...

Our ROMEX® Trass Bed compound can be installed directly on top of your project's insulation and radiant heat system build-up. With recommended depths ranging from 2" for pedestrian areas to 3" and above for vehicular loading, the RSG product can cater for all applications.

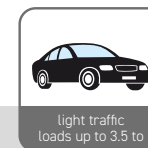
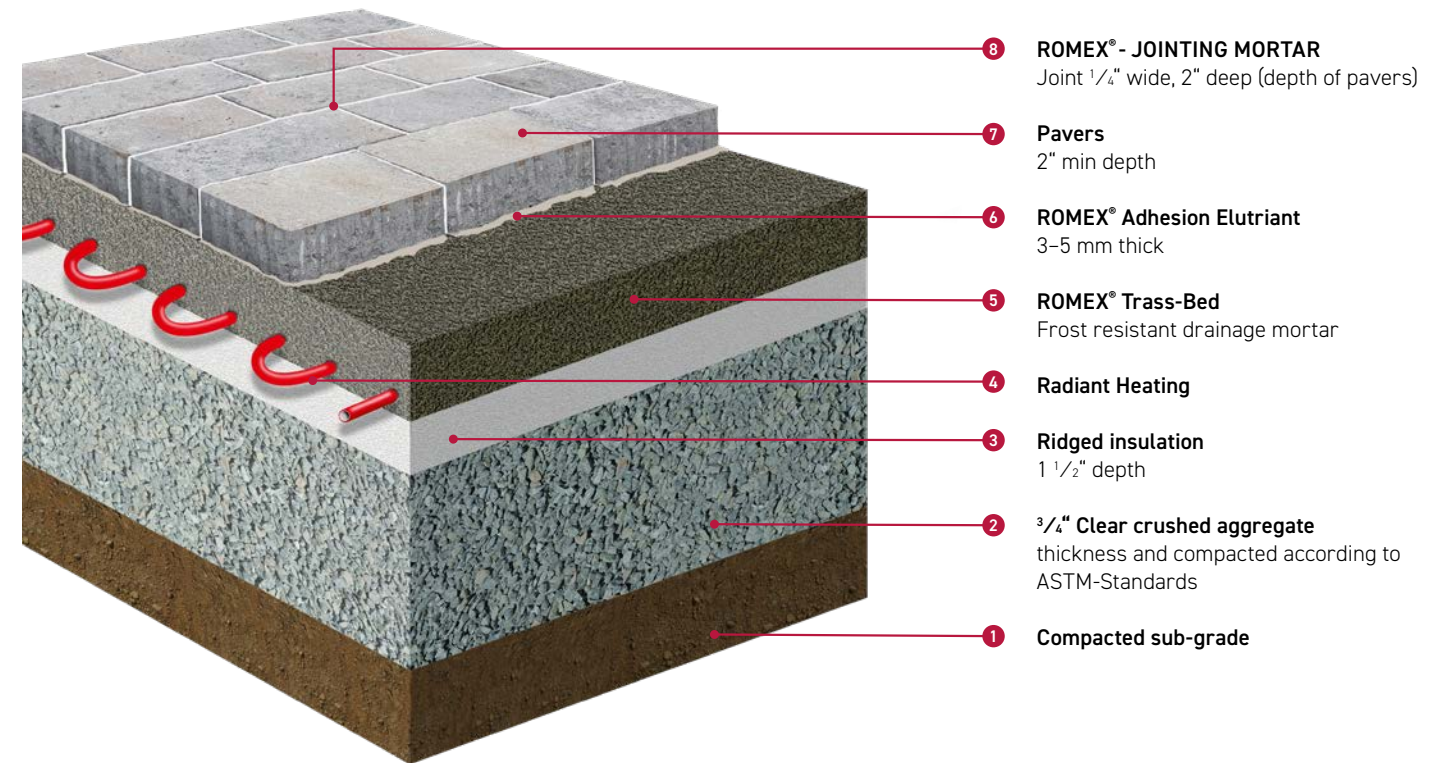
Installation is easy, efficient and done in one shot as opposed to the traditional two-step process associated with a typical concrete slab. The Trass Bed compound is poured wet and leveled to the correct depth and coverage before the pavers are backed with 3-5 mm of our ROMEX® Adhesion Elutriant ("thin set") and placed in to position, forming a strong "wet-to-wet" bond.

When installed correctly, our Trass Bed compound provides a stronger, more durable and cost efficient solution to an impervious concrete slab.



ROMEX® SYSTEM BONDED-COMMERCIAL

For the **bonded construction** with radiant heated paving systems (from pedestrian loading up to light vehicle loads)

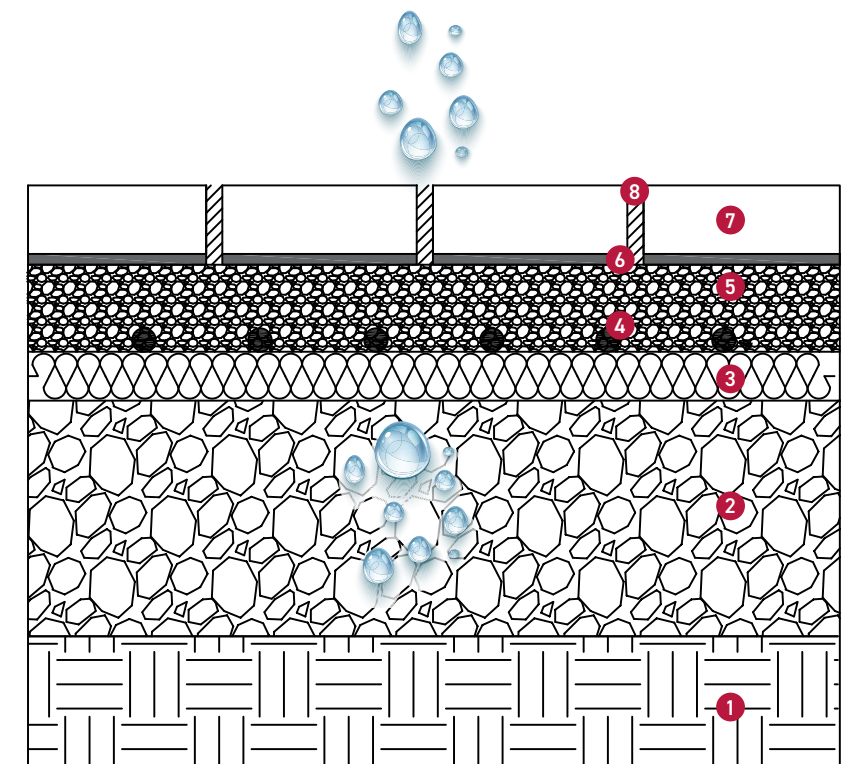


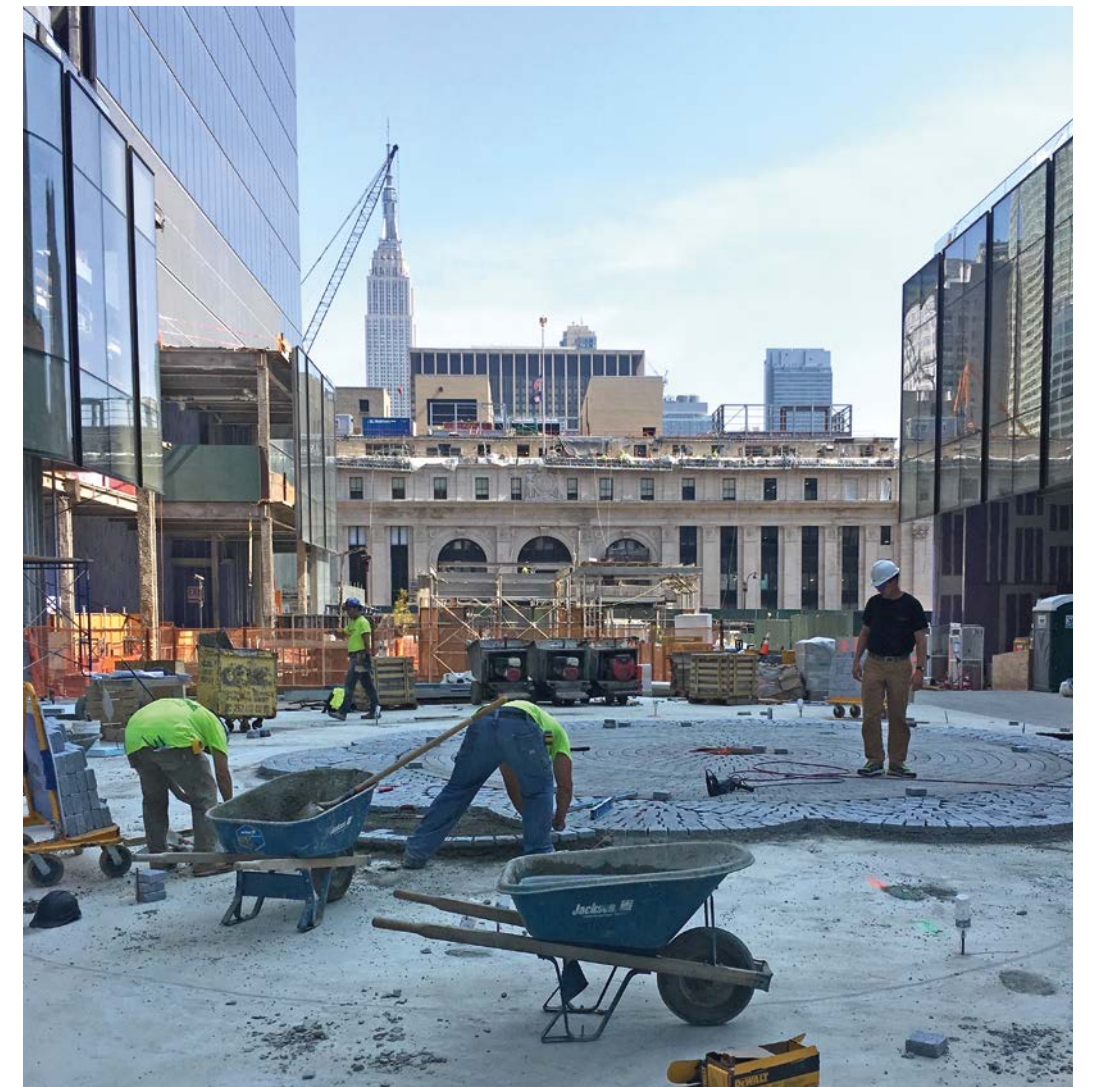
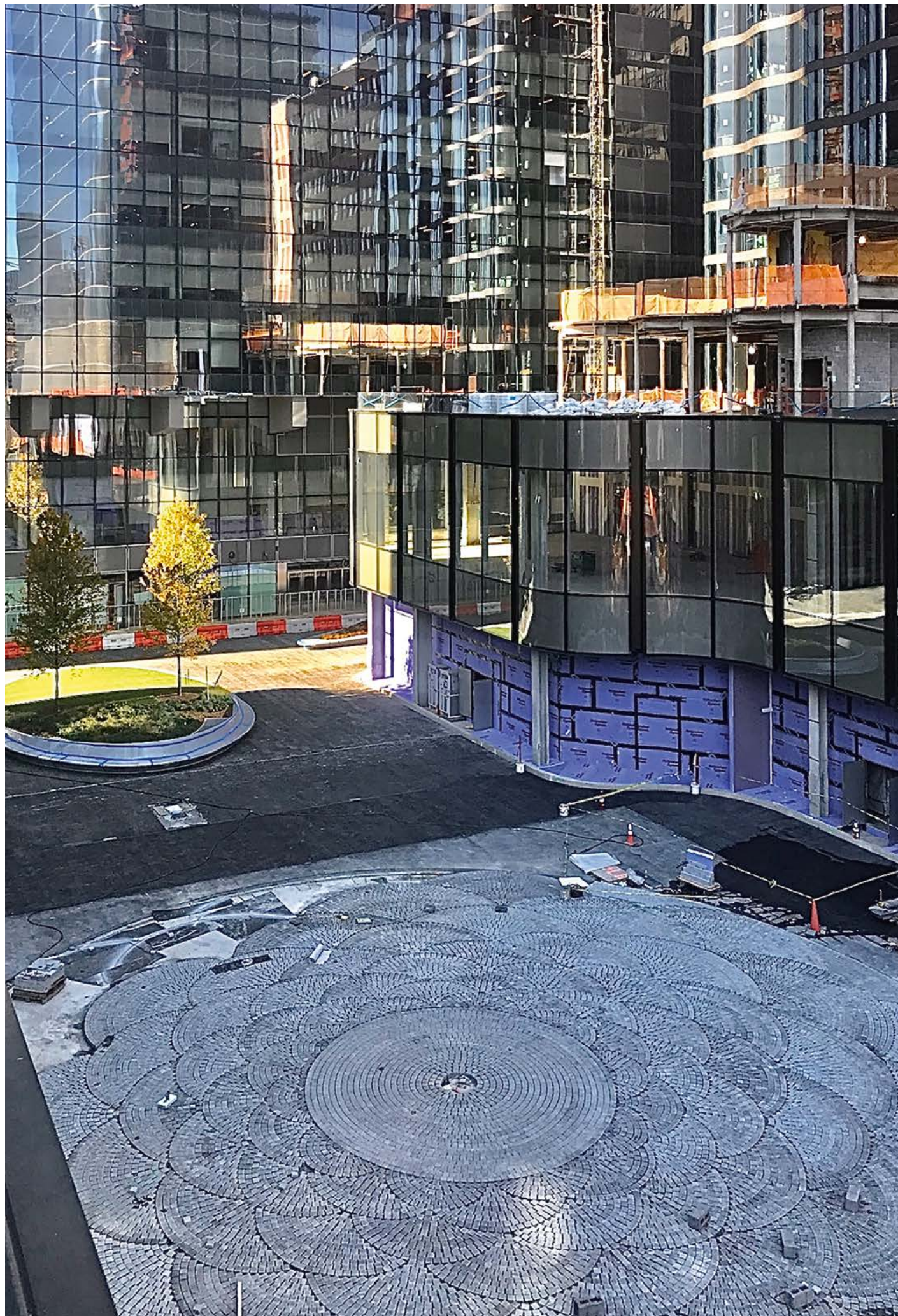
On grade vehicular:

Passenger car traffic including

Minimum requirement for fastenings/
surface covering: Minimum nominal
thickness (stone height)

On special request





Manhattan West Development

The grand central plaza of Manhattan West is an expanse of granite masonry. In the center of the plaza is an event space that is delineated by an 80' granite cobblestone circle. The cobblestones are set in a repeating radius flower peddle pattern (stone 4.5" x 4.5" x 1.75" Jet Mist, Water Jet Coarse Finish Cobble). The ROMEX® Trass Bedding System was specified for this cobblestone portion for several reasons: incredible durability, permeability, reduced lifespan maintenance, efficient time saving installation processes, long term warranty, and excellent aesthetics. Within the massive 5000+sf circle no additional drainage is needed and no expansion joints needed, allowing the pattern to remain unbroken and consistent.

The plaza space will be anchored by several retail stores and will see massive pedestrian traffic on a daily basis. The plaza will also be utilized as maintenance access to the office/residential towers that surround it. Heavy wheeled lift equipment will be able to traverse the plaza with no worry of damaging the ROMEX® Trass Bedding system.

ROMEX® products allow for designers to create traditional hardscapes with natural and manufactured stone and pavers with the environmental benefits of permeability and uncompromised durability.

Project: Manhattan West: Retail and Central Plaza

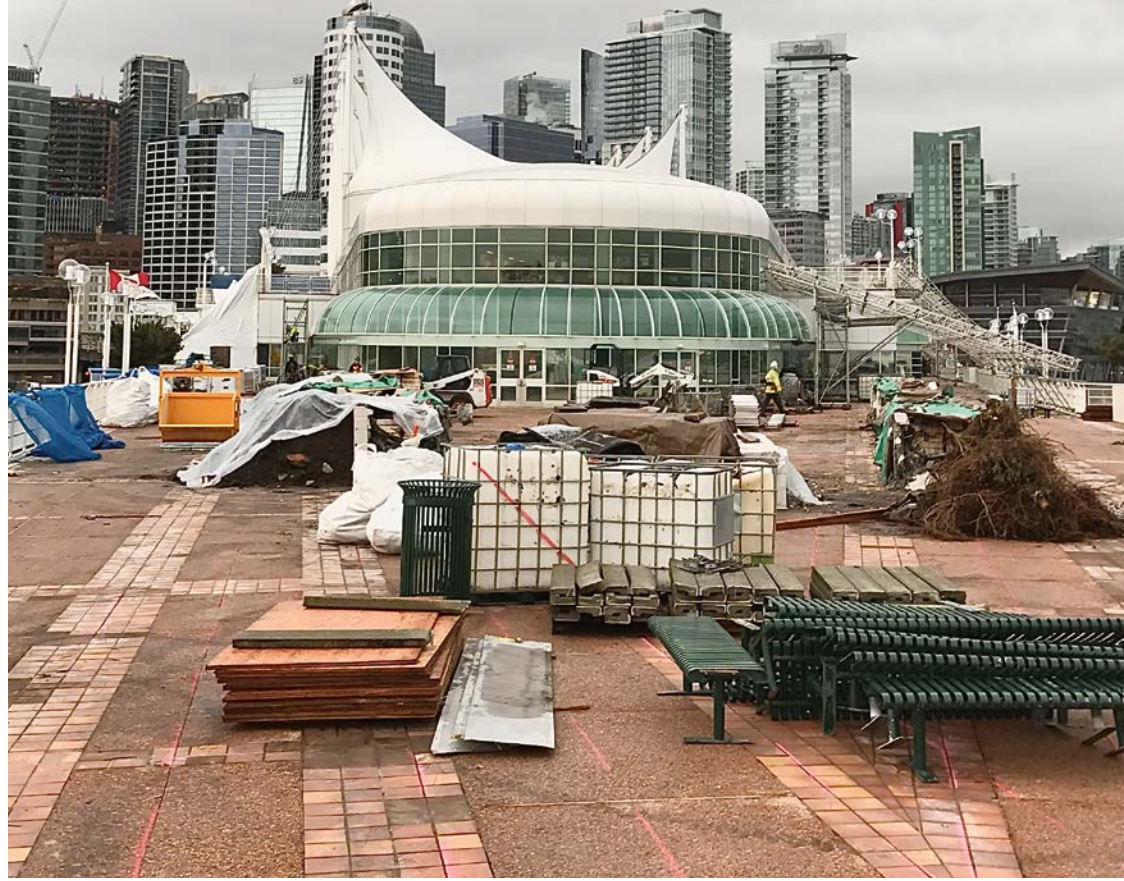
Address: 435W 31st Street, New York, NY

Owner: Brookfield

Architect: Skidmore, Owings, & Merrill LLP

Landscape Architect: James Corner Field Operations

Contractor: Tishman Construction; Aecom
Mason Contractor: Wilkstone, LLC



One of downtown Vancouver’s most popular public spaces has received a complete revamp

The North Point plaza, the very northern tip of the Canada Place pier, was recently reopened after a renovation that redesigned the plaza with aesthetic upgrades and a new layout to make the space more event-friendly.

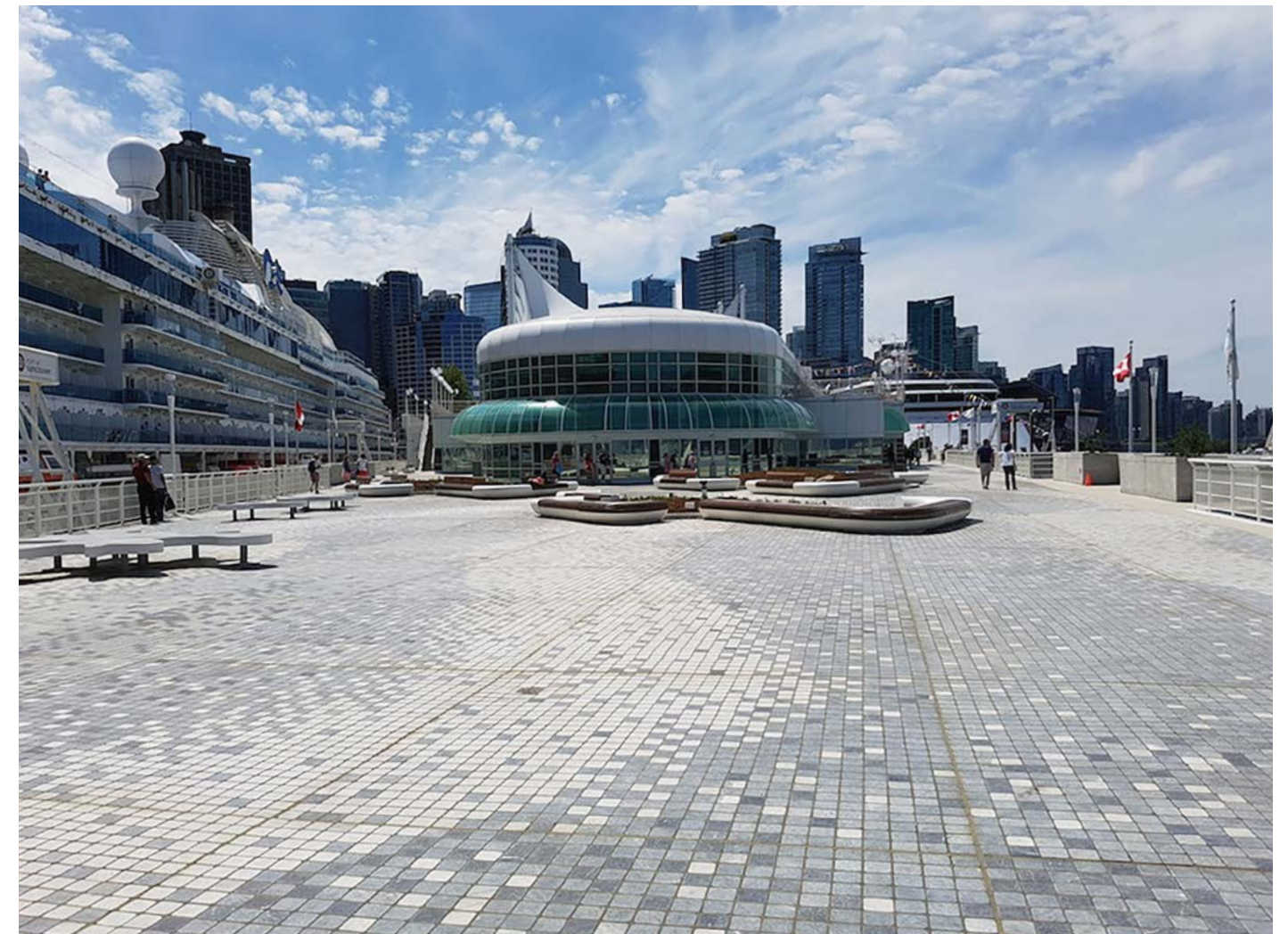
“The redesigned space is a Canada 150 at Canada Place legacy for the community,” Evangeline Englezos, Director of Community & Aboriginal Affairs for the Port of Vancouver, told Daily Hive.

“The North Point promenade offers visitors a unique place to gather and attend community events, while showcasing Canada’s largest port, the Port of Vancouver.”

The area that was renovated starts on both the west and east promenades immediately north of FlyOver Canada and is distinguished by its new pattern of tiling.

Upgrades also included the removal of interior planters, installation of new and more sustainable LED lighting, a parkette feature, a new stage at the northernmost tip, and new seating.

Some of the events that are held on the plaza annually include Canada Day at Canada Place, Waterfront Cinema, and Waterfront Zumba. As well, this year’s Christmas at Canada Place festivities will expand to the North Point area.



The previous plaza space design was completed in 2001 as part of the extension of Canada Place to accommodate a longer and additional berth for the cruise ship terminal.

Canada Place building was refreshed and given a new look. This particular segment of renovation was on the plaza deck, which is over parking areas and office spaces. A three-color paving pattern was selected, and grouting products from ROMEX® Materials were used to secure the pavers into place. To ensure a successful installation, the team went through both on- and off-site trainings for the four products used: one to bind the base course, one to adhere the paving to the base, and two grout products.

